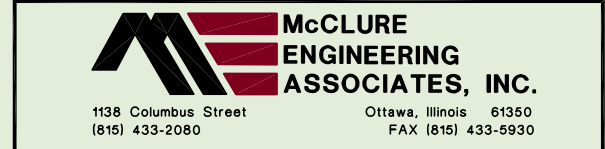
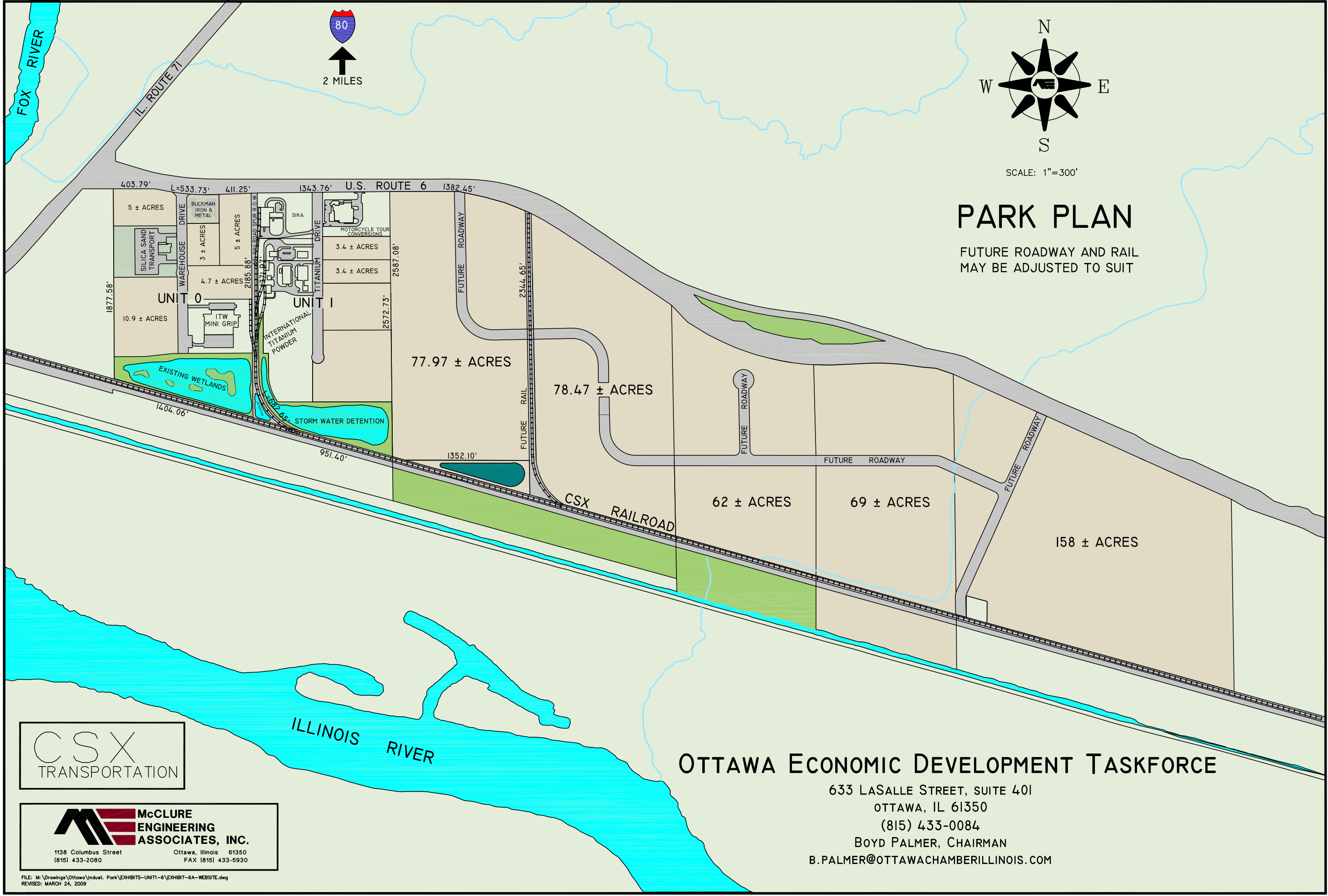


SCALE: 1"=300'

PARK PLAN

FUTURE ROADWAY AND RAIL
MAY BE ADJUSTED TO SUIT



OTTAWA ECONOMIC DEVELOPMENT TASKFORCE

633 LASALLE STREET, SUITE 401
OTTAWA, IL 61350
(815) 433-0084

BOYD PALMER, CHAIRMAN
B.PALMER@OTTAWACHAMBERILLINOIS.COM

FILE: M:\Drawings\Ottawa\Indust. Park\EXHIBITS-UNIT1-6\EXHIBIT-6A-WEBSITE.dwg
REVISED: MARCH 24, 2009